



Founding Futures

Building a better future for people with an acquired brain injury

Better Choices

Better Support

Better Outcomes



E.W. TIPPING FOUNDATION

Independence. Choice. Community for all.



Rebecca's life changed forever

It's been twenty years since Rebecca, just 18 years old at the time, was struck by a car while crossing the road.

The broken bones were devastating enough, but they hardly compared to the massive head injuries that left Rebecca in a coma for four months.

When Rebecca finally awoke from the coma, her battle was just beginning. She faced months of painful rehabilitation just so that she could walk and talk again.

The accident changed her life, and the life of her family, forever. Gone were all the hopes and dreams of a young woman.

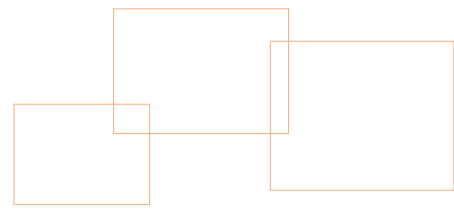
"THE THING I MISS MOST IS MY MIND. THEY CAN'T FIX MY MIND. IT HAS BEEN DAMAGED AND THAT'S ALL THERE IS TO IT. I WILL NEVER BE ABLE TO READ CONVENTIONALLY, OR RUN, OR DANCE OR USE MY RIGHT HAND PROPERLY."

Rebecca can never go to work and has lost contact with her friends and social circle. For Rebecca, this has been one of the hardest things to cope with.

Suddenly, Rebecca was dependent on those around her, and always will be.

Say YES to making a difference: help build a better future for people with acquired brain injury.

One in 45 Australians has an Acquired Brain Injury (ABI)



A message from the Chair and Chief Executive Officer

With a forty year reputation for quality service delivery, and a focus on a commitment to social justice, EW Tipping Foundation delivers best practice support services to improve quality of life for people with a disability, families, children, youth and older Victorians.

Our services have evolved to seek new, imaginative solutions for people with a disability, and in 2010, our 40th anniversary year, we are launching Founding Futures.

This landmark initiative will improve the lives of people with acquired brain injury through two exciting new projects:

- a world class rehabilitation centre,
- four new residential homes providing innovative living options for younger people at risk of living in aged care.



We invite you to become part of Founding Futures to build a better future for Victorians with acquired brain injury. Your support will make a real difference.

Please join us as we continue our fine tradition of innovation in community service, and partner with EW Tipping Foundation to achieve our vision of independence, choice and community for all.

Frank Cullen
Chair, Board of Governors

Richard Dent
Chief Executive Officer



EW Tipping Foundation

The EW Tipping Foundation is a non-profit community organisation that provides community support services across Victoria.

Our vision is: Independence, Choice and Community for all.

Our services are flexible and individualised, to focus on the needs and choices of the person we are supporting. They include:

- residential support (shared supported accommodation and supported living)
- respite care and services, both facility-based and in-home
- support for children requiring crisis care and Out of Home Care (formerly child protection)
- after school care programs for primary aged children
- programs transitioning people to independent living
- dementia care

Our innovative projects enhance the quality of life for the people we support and include:

- Direct Life and Living My Life My Way, which support people with a disability to move to independent living
- Community Kitchen in Warragul teaches life skills in cooking, budgeting and nutrition, and helps to build social networks
- SustainAbility Stars empowers people with a disability and support staff in group homes to take simple actions for household sustainability
- Community Links connects people we support in group homes with mentors from community groups to increase their community access and social networks

For more information, please go to www.tipping.org.au

“IT WAS NEVER MY PLAN TO ALWAYS LIVE WITH MY MOTHER (NOR SHE WITH ME AS IT TURNS OUT) FOR THE REST OF MY LIFE. THERE IS NO WAY I COULD LIVE ON MY OWN.” Rebecca

Our Experience and Success in Major Projects

We have demonstrated experience in successfully completing major construction projects.

We have worked in partnership with the community of Cardinia Shire to construct a respite facility in Pakenham, which opened in February 2005; and with the community of Moorabool Shire to construct a respite facility in Bacchus Marsh, which opened in August 2008.

We support people with an acquired brain injury in a variety of settings, including fully-staffed residential homes and family homes.

We have substantial experience in providing safe, stable yet flexible support services that are responsive to the individual's need and recognise particular issues a person with an acquired brain injury may face.



One in every five strokes happens to a person aged less than 55

The impact of an Acquired Brain Injury

Acquired Brain Injury (ABI) can happen to anyone at anytime – and the effect is devastating.

We often think about the terrible physical damage caused by a brain injury – imagine not being able to move or walk, being unable to talk, or unable to do everyday personal tasks.

But what about the hidden impact?

An injury to the brain can change the way we think and the way we process things. People with a brain injury can lose their memory, have trouble concentrating, and suffer mood swings and depression.

Imagine what this means for them and their families. Many lose their independence, requiring daily care for the rest of their life. They can never return to work and they lose contact with their friends and social circle.

The impact and cost of ABI to the community is considerable.

Limited Options

With limited treatment facilities or appropriate accommodation available, long term rehabilitation and ongoing support can present huge challenges.

An ABI disability requires complex and specialised rehabilitation and support. Many people with an acquired brain injury do not live in accommodation suited to their needs, and do not have access to rehabilitation programs that maximise their ability to recover to their full potential.

That's why we are developing an innovative, world-class rehabilitation centre, the first of its kind in Victoria, which uses the latest therapies developed in the UK.

We are also participating in the construction of four new purpose-built homes for people with an ABI at risk of living in nursing homes.

“ AT THE AGE OF 20, I LIVED IN AN AGED CARE NURSING HOME. FIVE YEARS OF SOUP AND SANDWICHES FOR DINNER AND LIGHTS OUT EARLY. AND EVEN WORSE, BEING TOLD TO BE QUIET – ANOTHER NEIGHBOUR IS DYING TONIGHT. YOUNG PEOPLE DON'T BELONG IN NURSING HOMES.”

John McKenna, Director, EW Tipping Foundation, Disability Professional of the Year, 2009

People with an ABI can suffer from:

- **poor memory and concentration**
- **difficulty planning and problem solving**
- **depression and emotional instability**
- **significant problems with social interaction**
- **problems with personal care and mobility**

They may:

- **never return to work**
- **require extensive, long term rehabilitation**
- **require support for the rest of their life**



Three out every four people with an ABI are aged less than 65

Two Exciting New Projects



1. The ReNew Centre – world class rehabilitation

EW Tipping Foundation is partnering in a joint venture to establish a world class rehabilitation centre in Altona, west of Melbourne.

This innovative centre will use the latest therapies developed in the UK. Unlike other rehabilitation hospitals, our centre will provide intensive rehabilitation in a community setting so that people can re-learn the skills they need to regain their independence. Research shows that the better the rehabilitation in the early stages, the less support people will need for the rest of their life.

Thirty self-contained units will provide comfortable living arrangements, with both communal and quiet living spaces that are suitable for visits from family members, set in pleasant gardens next to a park in a quiet residential area.

The ReNew Centre will offer:

- 30 individual rooms set in a residential area, close to local amenities and parkland with good transport
- a number of living areas, quiet rooms, three fully-furnished kitchens, three specialised bathrooms, a courtyard and garden settings
- a rehabilitation program of 6-9 months per person
- specialised staff trained in the service model, including psychologists, occupational therapists, speech pathologists and physiotherapists.

What makes the ReNew Centre different?

- 1. Rehabilitation is based on real life using a community integration model, not a replica or hospital setting**
- 2. All staff are trained to apply the same therapy giving a coordinated intensive neurobehavioural therapy approach**
- 3. We focus on functional goals to give people the practical skills they need for independence**
- 4. Each person's program is measured and evaluated individually, as accurate evidence of therapy effectiveness and improvement**

“ BEFORE THE ACCIDENT, I WAS A VERY SOCIAL PERSON AND I FOUND IT MORE DIFFICULT THAN ANYONE WILL EVER KNOW, TO LOSE AS MANY MATES AS I DID.”



Over 55% of ABIs are caused by traffic accidents

A self sufficient & financially sustainable project

The ReNew Centre joint venture positions the E W Tipping Foundation as a leader in innovative and unique support for people with an acquired brain injury with the capacity to provide complex care and support.

The EW Tipping Foundation is committed to the ReNew Centre, with a total project budget of \$3m. The joint venture allows a financially sustainable model for establishing and operating the centre.

Our project partner

This is a joint venture between EW Tipping Foundation and ReAbility Australia using the Brain Injury Rehabilitation Trust (UK) model.

The professional leading edge rehabilitation skills and research that Brain Injury Rehabilitation Trust (BIRT) brings to our ReNew Centre, through their Australian arm ReAbility Australia, are a valuable contribution to Victoria.

In the UK, the following results have been achieved:

- Prior to treatment at the centre, 72% of users required full-time direct care; only 14% required this care when leaving.
- 76% of people had no productive activity on entering the centre; only 20% had no activity on leaving.
- 62% of people completing treatment at the centre moved to an environment with less supervision and a lower cost.
- The best outcomes were achieved for people within one year of suffering their injury, however there were significant gains in people who had suffered their injury many years before.



www.birt.co.uk



Rupert Johnston, BIRT'S Kent House, UK

Rupert has been photographed in his flat at Kent House with his sister Izzy. It is his own place where he feels in control, and where he has the things that are important to him: his French horn, his England flag, his computer.

Rupert was a talented musician in his first year at the Guildhall School of Music, when, just before his 19th birthday, he was involved in a horrific car accident. Rupert's skull was smashed and his brain so severely damaged that for 18 months his family didn't know if he was going to live or die.

Rupert had to learn to walk and talk again but due to the Brain Injury Rehabilitation Trust's intensive rehabilitation programme he has regained many of the skills he lost as a result of his brain injury and now has his own flat within one of BIRT's services. Rupert is able to play the French horn again and recently performed in a concert.

**Say YES to making a difference:
help build a better future for people
with acquired brain injury.**

Falls, assault, stroke and illness also contribute to ABIs

2. Supported accommodation in Moe, Wodonga, Oak Park and Bairnsdale

The EW Tipping Foundation is proud to be in community partnership with the *my future my choice* project. This vital government initiative will provide appropriate accommodation and support for young Australians who are living, or are at risk of living, in residential aged care.

EW Tipping Foundation is participating in the development of four of these new purpose-built homes to accommodate younger people in this risk category.

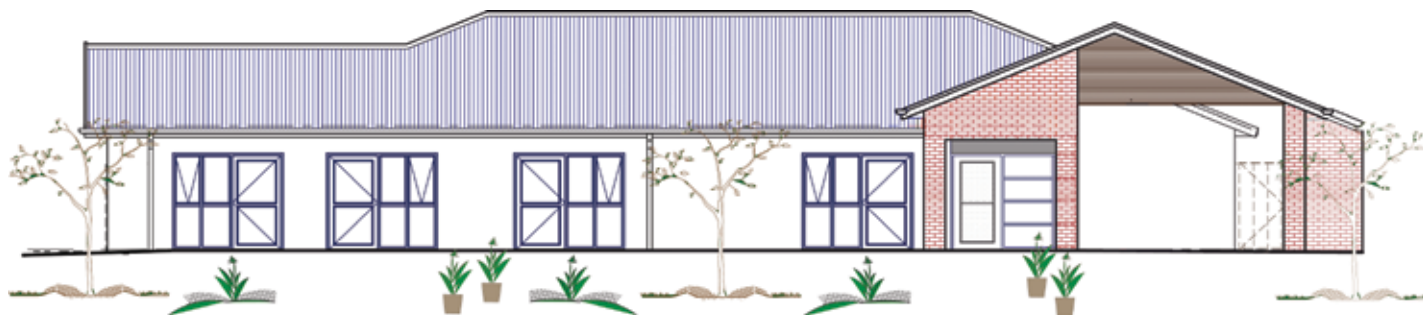
Four new homes

Each purpose-built house will include:

- six private bedrooms
- a welcoming atmosphere and private space to entertain visitors
- suitable facilities to cater for individuals' needs and preferences
- two separate living areas and private accommodation
- garden and covered outdoor areas
- fully-equipped kitchen and dining areas

This initiative will:

- provide better living options for younger people at risk of living in nursing homes
- support young people with disabilities to reach their potential
- encourage personal development and community participation
- provide additional information, and coordinate other support as needed



A Self Sufficient Funding Model

Each house constructed as part of the *my future my choice* initiative is estimated to cost more than \$1m. The Bairnsdale house is fully funded. Government funding provides 85% of funding for the other houses with EW Tipping Foundation

committed to contributing 15% of the cost, capped at \$270,000 per house. On completion, the EW Tipping Foundation will hold the titles to the properties. Plus, ongoing funding for service delivery has been secured.

Say NO to aged care accommodation for young Australians.

Say YES to making a difference: help build a better future for people with an acquired brain injury.

Over 6700 young Australians, many with brain injuries are currently



Mark knows what it is like to be a young person living in a nursing home

When Mark was in his early 20s, he prided himself on being independent – living, working and planning for the future. Then, one day, his life changed forever.

He suffered a serious brain injury and became fully dependent on those around him. He is now unable to speak or smile, and struggles with his motor skills as his body is slow to react. He walks slowly and finds it hard to use his hands to grip things.

In the years following his accident, Mark lived in an institution.

Through perseverance from his family, Mark found a permanent place to live in a home specially designed for young people with an acquired brain injury.

Able to get the care and support he needed, he now enjoys basketball and soccer in the backyard, plays pinball in his own unit and goes to concerts with his support worker. Mark knows he is lucky to have a place he can really call home.

Better Outcomes

This accommodation initiative takes into account the support needs, choices, goals and aspirations of each resident. As in all of our services, we will work to develop the full potential of each person. Within the context of their individual circumstances, each person with a disability will be involved in the decision-making about their own lives, including:

- input into how the home is run
- flexible routines and support
- choice over daily routines such as bedtimes and mealtimes
- access to the local community with minimal reliance on staff

Financial Details

Four New Homes

| Location | Our Target |
|------------|--------------|
| Bairnsdale | fully funded |
| Moe | 270,000 |
| Wodonga | 270,000 |
| Oak Park | 270,000 |

The ReNew Centre

The total project budget for the ReNew Centre is \$3m. Our project partners have already pledged \$1.3m, with the joint venture allowing a financially sustainable model for the centre.

| Features | Total Value GST Excl. |
|---|--------------------------|
| Medical/Therapy/Admin/ Reception | 468,000 |
| Commercial Kitchen | 330,000 |
| ADL Kitchen x 2 | 92,000 |
| Main Lounge Areas/Common Use – comprising three large rooms | 156,000 |
| Garden | 160,000 |
| Common Rooms (tv, family, dining) x 4 | 78,000 each |
| Bedrooms & Ensuite | 30 @ 34,000 |

Recognition of Support

The EW Tipping Foundation realises the importance of recognising the generosity of donors who play a significant role in the funding of the Founding Futures initiative.

The ReNew Centre and the new houses will feature commemorative plaques in recognition of major donors.

We would welcome the opportunity to discuss with you the ways in which we can acknowledge and recognise your generous support.

How can I say YES to making a difference?

There are many ways in which you can make a difference.

You can help by:

- Making a Lead Donation to our fundraising appeal in 2010
- Pledging a gift payable over a period of up to three years
- Leaving a bequest in your will

Your gift to this appeal will make a profound difference to the lives of those young Victorians suffering from an acquired brain injury.

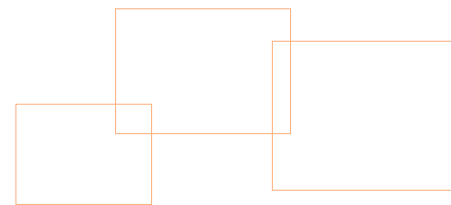
For more information, to meet with Richard Dent, our CEO, or to support this project with a donation, contact:

Gail Siracusa
Manager CEO's Office & Community Relations
P: 03 9564 1011
E: gail.siracusa@tipping.org.au
EW Tipping Foundation
Founding Futures Appeal
1036 Dandenong Road
Carnegie VIC 3163
www.tipping.org.au

Donations over \$2 are tax deductible.

82% of young people in nursing homes hardly ever see their friends

Your Questions Answered



Why doesn't the Government pay for this?

The government does contribute in many ways. The Bairnsdale house is fully funded. The government is funding 85% of the construction of the other residential homes. EW Tipping Foundation's equity is 15%.

Ongoing service delivery will be government funded.

What is the EW Tipping Foundation contributing towards this project?

Our contribution to the residential homes is capped at \$810,000 and the total capital cost for the rehabilitation centre is approximately \$3m, of which \$1.3m is already secured.

Do the members of the Board of Directors donate too?

Yes. Board members give generously of their time and contribute financially to our appeal. Their dedication and commitment is a vital key to our success.

Who else is donating to this project?

We are asking all of the friends of the EW Tipping Foundation, including businesses, trusts, foundations, our staff, community organisations, volunteers and service organisations to donate to this project.

Is my donation tax deductible?

Donations over \$2 are tax deductible and your official receipt will be issued promptly.

How will I know what happens with my donation?

We value and respect our donors. We will keep you informed of the progress of the Appeal and the project.

I would prefer to make a donation on a monthly basis, is that ok?

Contributions are welcome via direct transfer, cheque or credit card

\$10 each month over three years equals \$360

\$50 each month over three years \$1,800

\$100 each month over three years \$3,600

\$1,000 each month over three years \$36,000.

I would like to arrange a meeting with Richard Dent, CEO, to discuss the Founding Futures projects and the work of the EW Tipping Foundation.

To make arrangements, please contact:

Gail Siracusa

Manager CEO's Office & Community Relations

P: 03 9564 1011

E: gail.siracusa@tipping.org.au

47% never go shopping, or participate in leisure activities



E.W.TIPPING FOUNDATION

Independence. Choice. Community for all.



EW Tipping Foundation
Statewide Coordination Centre
1036 Dandenong Road, Carnegie, VIC 3163

Ph: (03) 9564 1000 Fax: (03) 9564 1004
www.tipping.org.au

EW Tipping Foundation gratefully acknowledges the generous ongoing support of many individual donors, community members and philanthropic trusts. This support has enabled us to undertake many of our innovative programs and has truly made a difference in the lives of the people we support.

